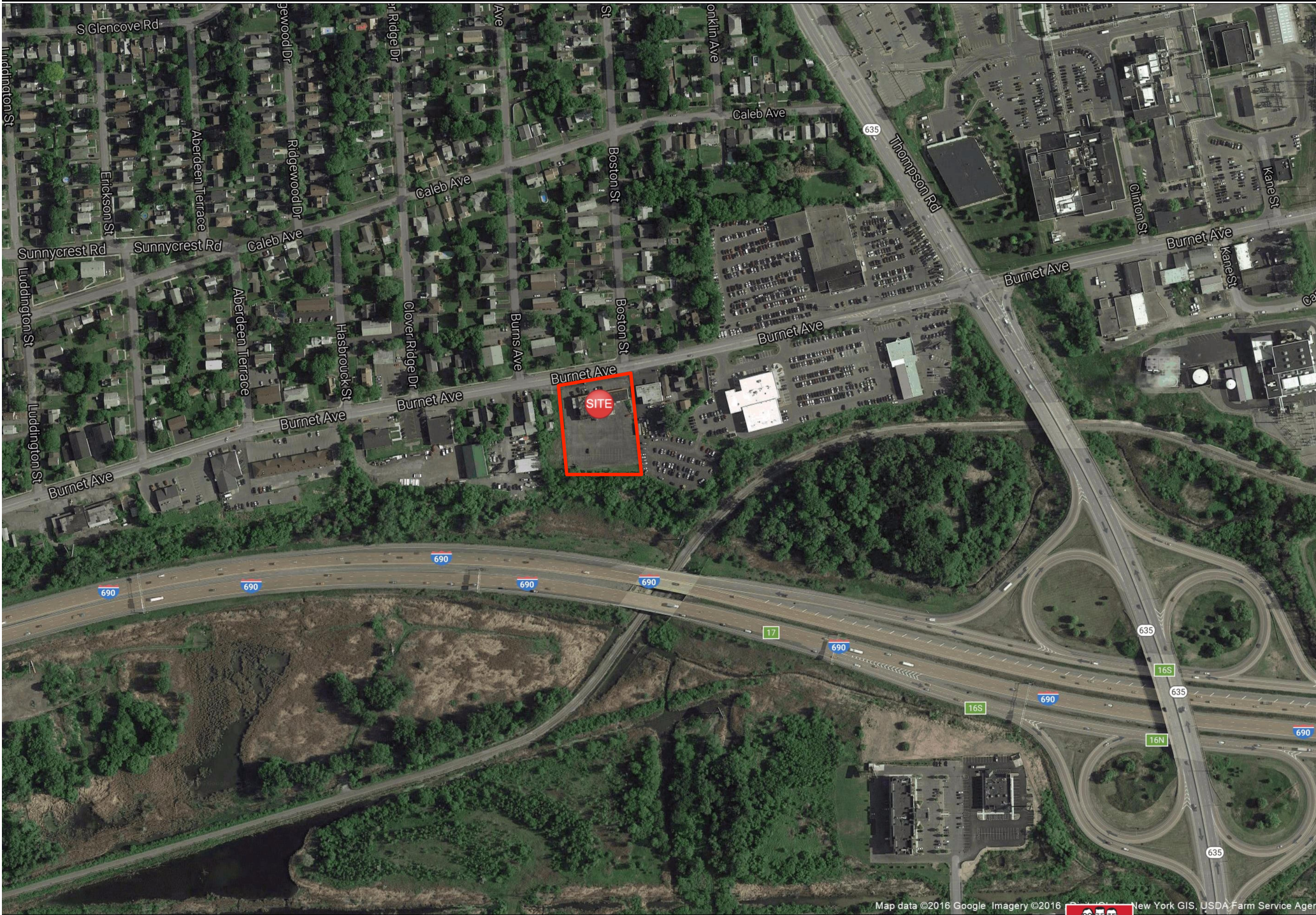
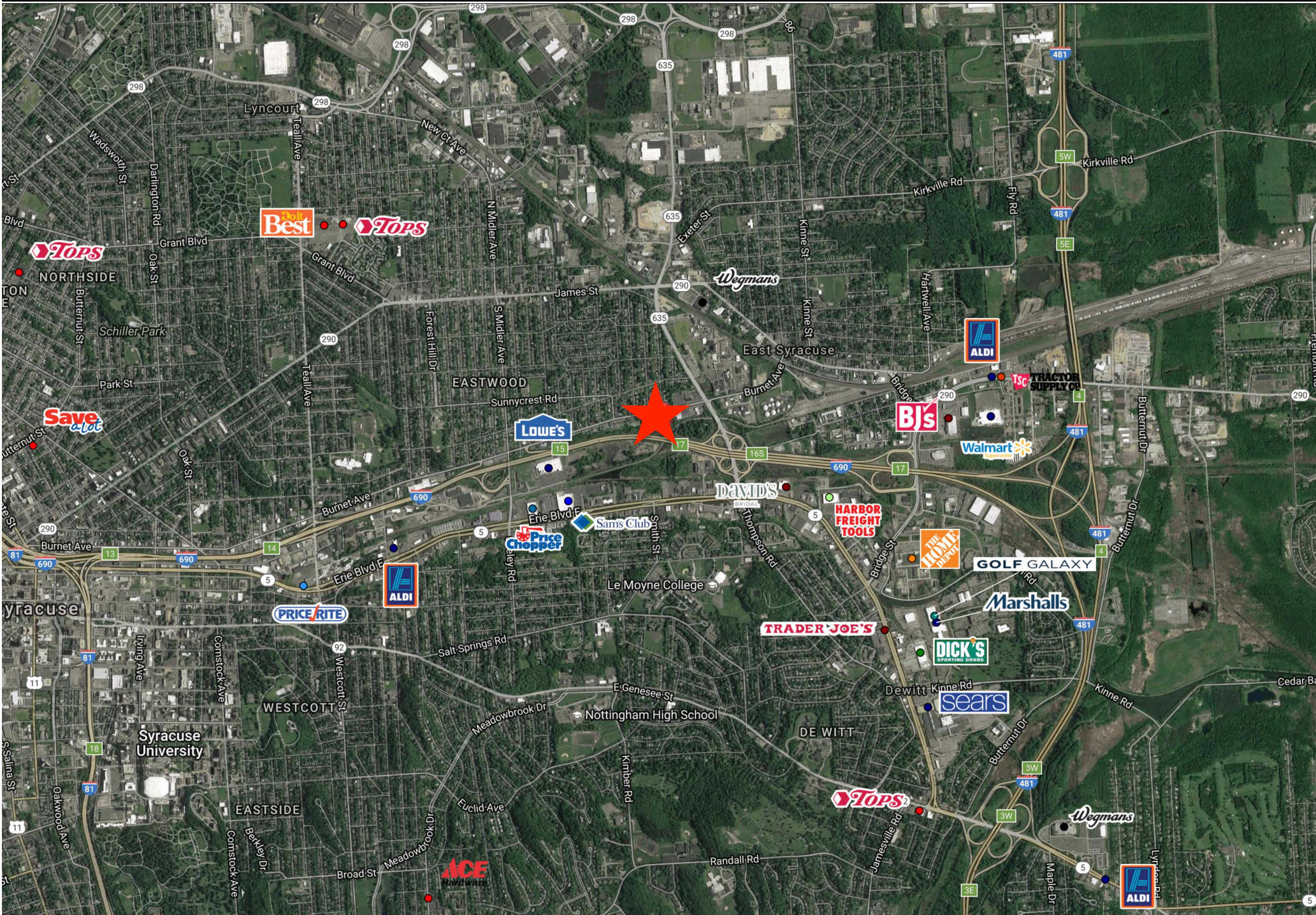
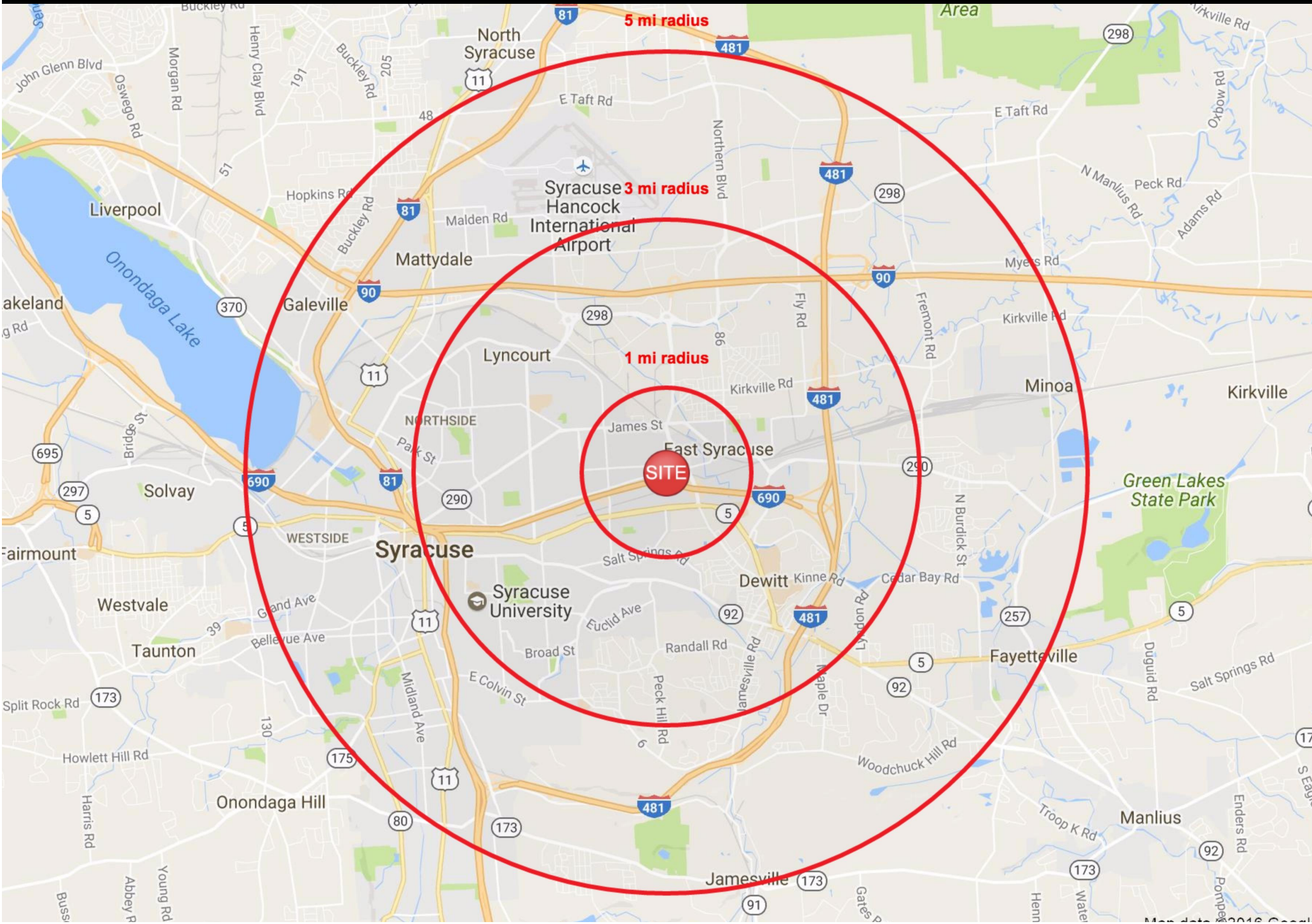


Map data ©2016 Google Imagery ©2016 DigitalGlobe



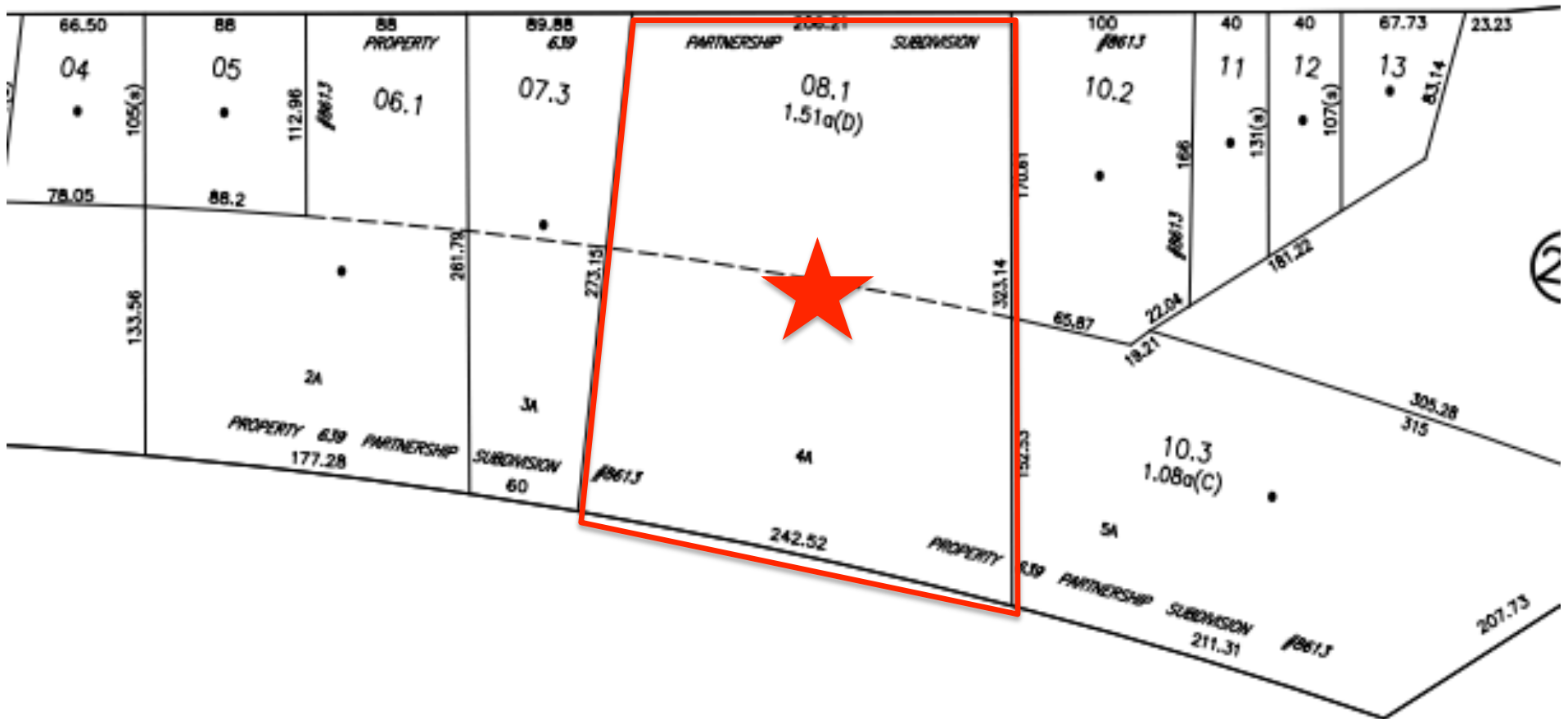
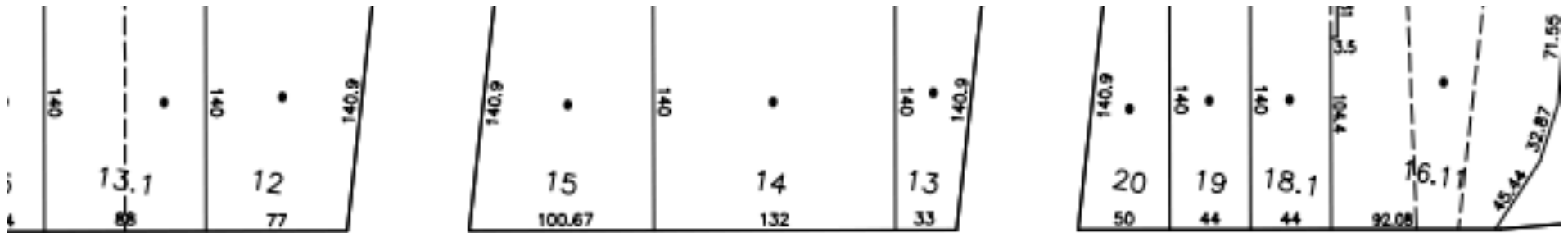
Map data ©2016 Google, Imagery ©2016 New York GIS, USDA Farm Service Agency





3414 Burnet Ave Syracuse, NY 13206	1 mi radius	3 mi radius	5 mi radius
Population			
Estimated Population (2016)	12,067	89,609	191,330
Projected Population (2021)	12,147	90,624	193,801
Census Population (2010)	12,538	91,645	192,643
Census Population (2000)	11,894	90,630	191,977
<i>Projected Annual Growth (2016 to 2021)</i>	80 0.1%	1,015 0.2%	2,471 0.3%
<i>Historical Annual Growth (2010 to 2016)</i>	-471 -0.6%	-2,036 -0.4%	-1,313 -0.1%
<i>Historical Annual Growth (2000 to 2010)</i>	645 0.5%	1,015 0.1%	667 -
Households			
Estimated Households (2016)	5,391	37,435	78,838
Projected Households (2021)	5,625	39,231	82,671
Census Households (2010)	5,431	37,085	76,866
Census Households (2000)	5,481	37,316	77,967
<i>Projected Annual Growth (2016 to 2021)</i>	235 0.9%	1,796 1.0%	3,834 1.0%
<i>Historical Annual Growth (2010 to 2016)</i>	-41 -0.1%	350 0.2%	1,971 0.4%
<i>Historical Annual Growth (2000 to 2010)</i>	-49 -0.1%	-231 -0.1%	-1,101 -0.1%
Average Household Income			
Estimated Average Household Income (2016)	\$52,523	\$59,529	\$58,252
Projected Average Household Income (2021)	\$58,835	\$68,403	\$66,810
Census Average Household Income (2010)	\$45,931	\$51,864	\$51,092
Census Average Household Income (2000)	\$43,396	\$45,317	\$43,348
<i>Projected Annual Growth (2016 to 2021)</i>	\$6,312 2.4%	\$8,874 3.0%	\$8,557 2.9%
<i>Historical Annual Growth (2010 to 2016)</i>	\$6,593 2.4%	\$7,664 2.5%	\$7,160 2.3%
<i>Historical Annual Growth (2000 to 2010)</i>	\$2,534 0.6%	\$6,547 1.4%	\$7,744 1.8%
Median Household Income			
Estimated Median Household Income (2016)	\$45,377	\$47,418	\$45,855
Projected Median Household Income (2021)	\$49,961	\$51,904	\$50,169
Census Median Household Income (2010)	\$38,327	\$40,963	\$40,560
Census Median Household Income (2000)	\$33,463	\$35,486	\$33,541
<i>Projected Annual Growth (2016 to 2021)</i>	\$4,584 2.0%	\$4,486 1.9%	\$4,314 1.9%
<i>Historical Annual Growth (2010 to 2016)</i>	\$7,050 3.1%	\$6,455 2.6%	\$5,295 2.2%
<i>Historical Annual Growth (2000 to 2010)</i>	\$4,865 1.5%	\$5,477 1.5%	\$7,019 2.1%
Per Capita Income			
Estimated Per Capita Income (2016)	\$23,811	\$25,310	\$24,414
Projected Per Capita Income (2021)	\$27,591	\$30,048	\$28,906
Census Per Capita Income (2010)	\$19,896	\$20,987	\$20,386
Census Per Capita Income (2000)	\$19,864	\$18,533	\$17,534
<i>Projected Annual Growth (2016 to 2021)</i>	\$3,779 3.2%	\$4,738 3.7%	\$4,491 3.7%
<i>Historical Annual Growth (2010 to 2016)</i>	\$3,915 3.3%	\$4,323 3.4%	\$4,028 3.3%
<i>Historical Annual Growth (2000 to 2010)</i>	\$32 -	\$2,454 1.3%	\$2,852 1.6%
Other Income			
Estimated Families (2016)	2,612	18,210	40,949
Estimated Average Family Income (2016)	\$68,617	\$79,719	\$75,071
Estimated Median Family Income (2016)	\$58,655	\$67,275	\$63,066
Estimated Average Household Net Worth (2016)	\$363,385	\$499,668	\$476,654

This report was produced using data from private and government sources deemed to be reliable. The information herein is provided without representation or warranty.







BURNET AVE
N. 79° 43' 10" E

