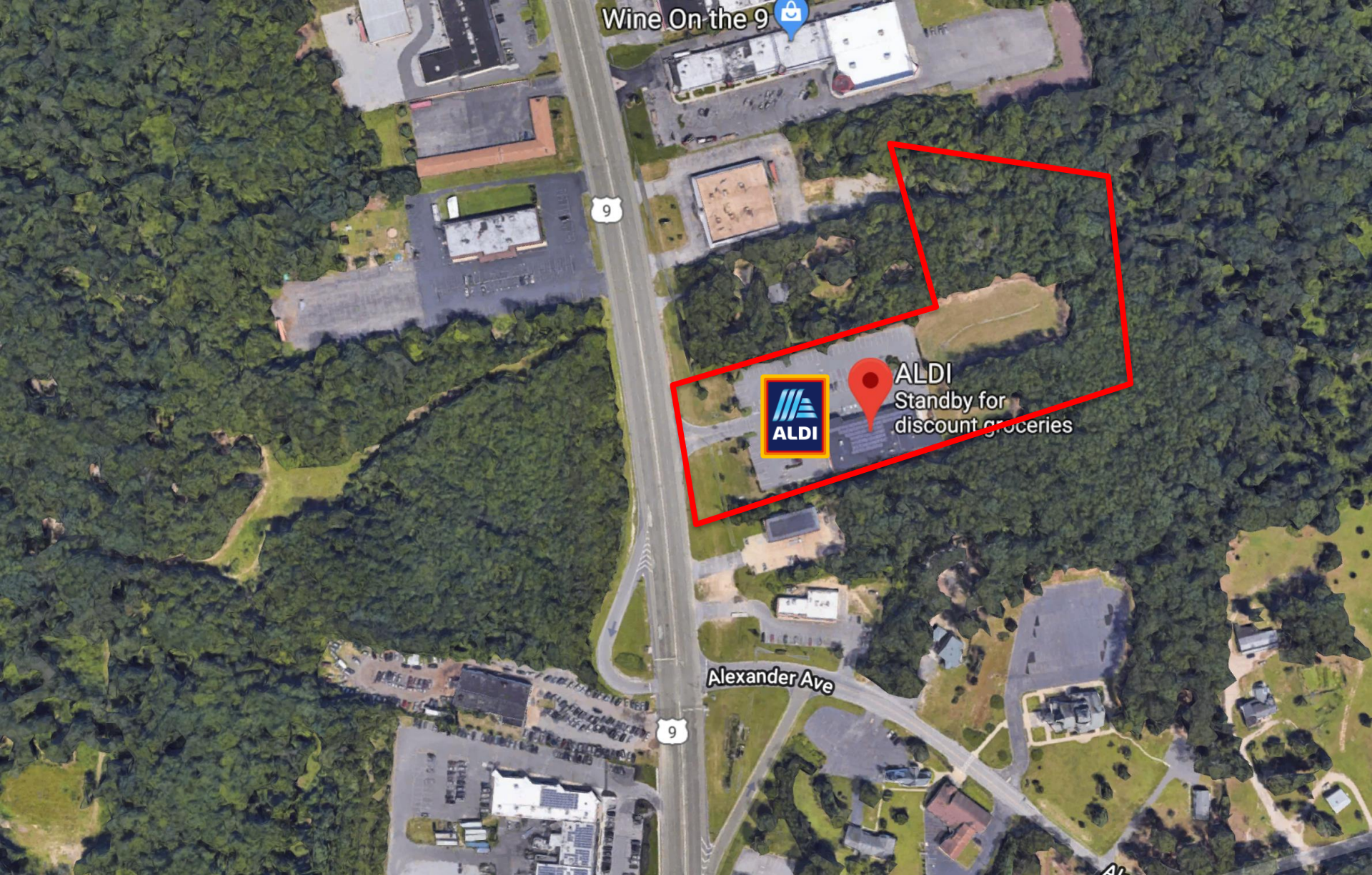
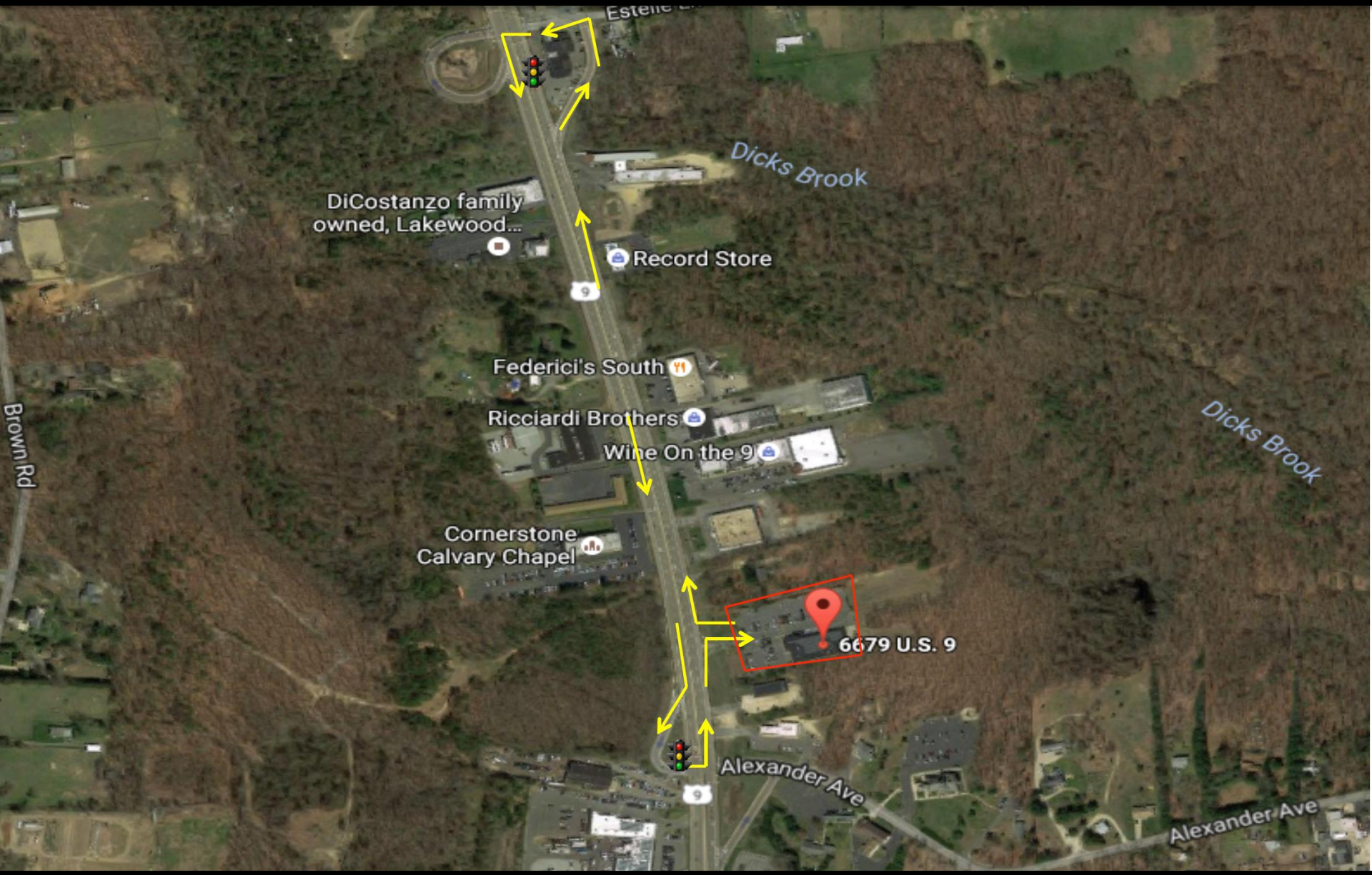
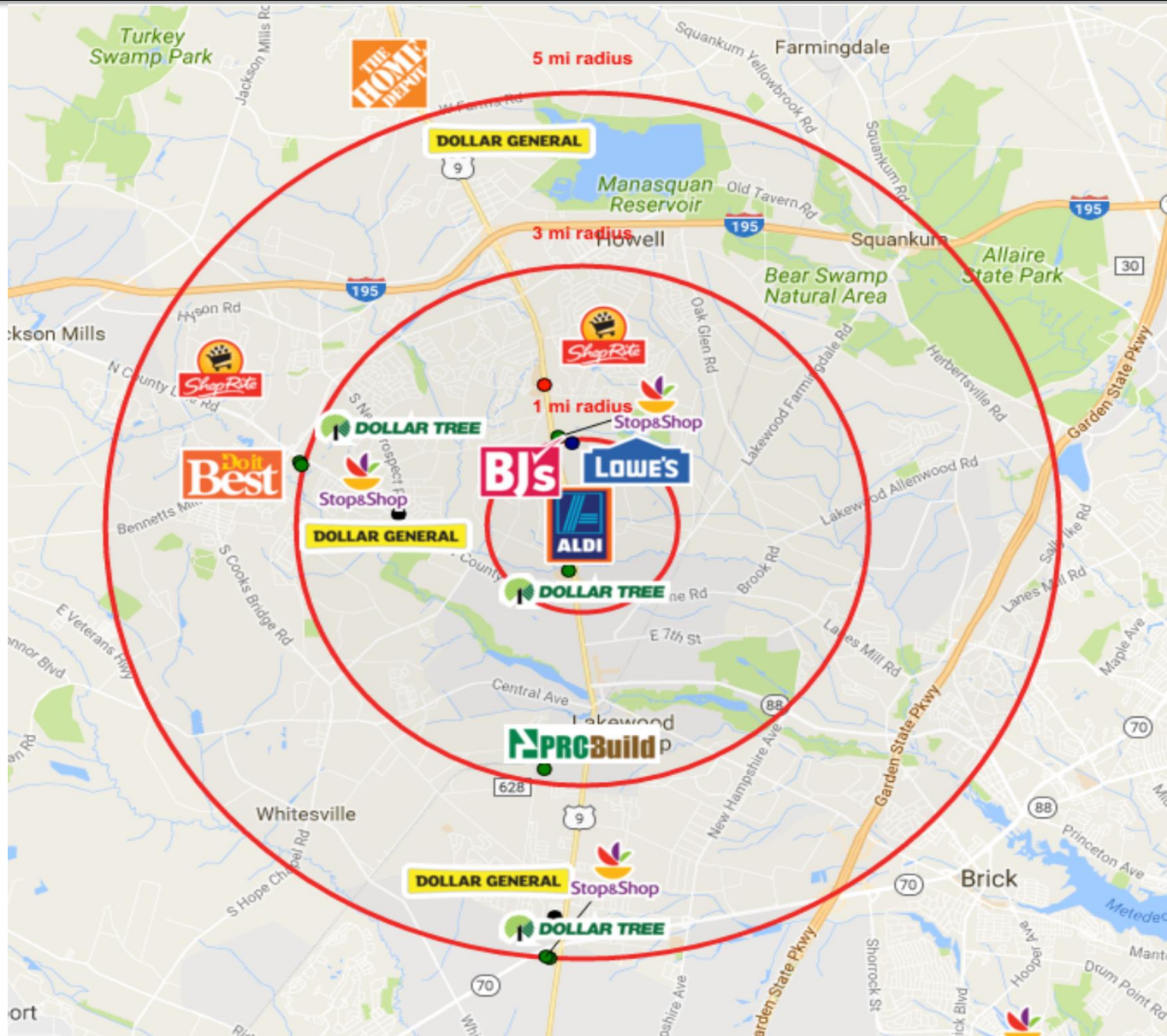




©2017 Google







**INCOME SUMMARY REPORT**  
 2000-2010 Census, 2016 Estimates with 2021 Projections  
 Calculated using Weighted Block Centroid from Block Groups

Lat/Lon: 40.1166-74.2175

6679 U.S. 9 Howell, NJ 07731		1 mi radius	3 mi radius	5 mi radius
<b>Population</b>				
Estimated Population (2016)	8,182	91,950	167,405	
Projected Population (2021)	8,297	93,702	170,623	
Census Population (2010)	8,147	90,553	165,556	
Census Population (2000)	7,351	68,443	125,954	
Projected Annual Growth (2016 to 2021)	115 0.3%	1,752 0.4%	3,218 0.4%	
Historical Annual Growth (2010 to 2016)	35 0.1%	1,397 0.3%	1,849 0.2%	
Historical Annual Growth (2000 to 2010)	795 1.1%	22,110 3.2%	39,602 3.1%	
<b>Households</b>				
Estimated Households (2016)	1,838	21,740	48,627	
Projected Households (2021)	1,874	22,319	49,914	
Census Households (2010)	1,828	21,379	47,982	
Census Households (2000)	1,890	18,923	39,411	
Projected Annual Growth (2016 to 2021)	35 0.4%	579 0.5%	1,288 0.5%	
Historical Annual Growth (2010 to 2016)	11 0.1%	362 0.3%	644 0.2%	
Historical Annual Growth (2000 to 2010)	-63 -0.3%	2,456 1.3%	8,571 2.2%	
<b>Average Household Income</b>				
Estimated Average Household Income (2016)	\$69,335	\$81,733	\$86,265	
Projected Average Household Income (2021)	\$81,675	\$95,682	\$101,746	
Census Average Household Income (2010)	\$61,918	\$72,851	\$76,351	
Census Average Household Income (2000)	\$52,314	\$63,822	\$64,748	
Projected Annual Growth (2016 to 2021)	\$12,339 3.6%	\$13,948 3.4%	\$15,481 3.6%	
Historical Annual Growth (2010 to 2016)	\$7,417 2.0%	\$8,883 2.0%	\$9,915 2.2%	
Historical Annual Growth (2000 to 2010)	\$9,604 1.8%	\$9,029 1.4%	\$11,603 1.8%	
<b>Median Household Income</b>				
Estimated Median Household Income (2016)	\$54,831	\$66,573	\$71,347	
Projected Median Household Income (2021)	\$60,372	\$74,131	\$79,441	
Census Median Household Income (2010)	\$46,104	\$59,292	\$64,935	
Census Median Household Income (2000)	\$44,227	\$54,164	\$56,025	
Projected Annual Growth (2016 to 2021)	\$5,541 2.0%	\$7,558 2.3%	\$8,093 2.3%	
Historical Annual Growth (2010 to 2016)	\$8,727 3.2%	\$7,281 2.0%	\$6,412 1.6%	
Historical Annual Growth (2000 to 2010)	\$1,877 0.4%	\$5,128 0.9%	\$8,910 1.6%	
<b>Per Capita Income</b>				
Estimated Per Capita Income (2016)	\$15,721	\$19,444	\$25,147	
Projected Per Capita Income (2021)	\$18,585	\$22,908	\$29,852	
Census Per Capita Income (2010)	\$13,890	\$17,199	\$22,128	
Census Per Capita Income (2000)	\$13,631	\$17,483	\$20,167	
Projected Annual Growth (2016 to 2021)	\$2,864 3.6%	\$3,464 3.6%	\$4,706 3.7%	
Historical Annual Growth (2010 to 2016)	\$1,831 2.2%	\$2,245 2.2%	\$3,018 2.3%	
Historical Annual Growth (2000 to 2010)	\$259 0.2%	-\$284 -0.2%	\$1,961 1.0%	
<b>Other Income</b>				
Estimated Families (2016)	1,579	18,048	37,640	
Estimated Average Family Income (2016)	\$74,488	\$89,226	\$96,864	
Estimated Median Family Income (2016)	\$59,746	\$74,225	\$83,108	
Estimated Average Household Net Worth (2016)	\$673,937	\$845,510	\$894,816	

This report uses census data from the census and government records. The information is based on the best available information and is not guaranteed.

Mileage & Drive Times from 6679 U.S. 9, Howell, NJ 07731

**Stop&Shop:**

4861 US Highway 9 Howell, NJ 07731 1.6 Miles/6 Minutes

2360 Lakewood Road Toms River, NJ 08755

5.2 Miles/ 17 Minutes

2275 W. County Line Road Jackson, NJ 08527 3.8 Miles/8 Minutes

**BJ's:**

U.S. Highway 9 & Lanes Mill Road Howell, NJ 07731 1.3 Miles/4 Minutes

**Shop Rite:**

260 N County Line Road Jackson, NJ 08527 6.0 Miles/14 Minutes

2016 FINAL/2017 PRELIMINARY TAX BILL

TOWNSHIP OF HOWELL, MONMOUTH COUNTY N.J.

YEAR TAXED 25  
 LOT NUMBER 18  
 TAXER'S ADDRESS  
 PROPERTY: US HIGHWAY 9  
 COUNTY: ...  
 DISTRICT: ...  
 EXEMPTION: 16.10AC  
 MAP: ...  
 MUNICIPALITY: ...  
 LOT # 00624100

EXPLANATION OF TAXES

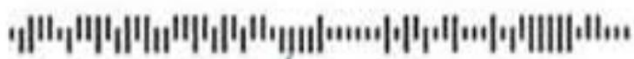
DESCRIPTION	(RATE PER \$100)	AMOUNT OF TAX
COUNTY TAX	0.273	6404.58
COUNTY LIBRARY TAX	0.019	445.74
DISTRICT SCHOOL TAX	1.185	27800.10
REGIONAL SCHOOL TAX	0.433	10158.18
LOCAL MUNICIPAL TAX	0.399	9360.54
COUNTY HEALTH TAX	0.005	117.30
COUNTY OPEN SPACE TAX	0.016	375.36
MUNI OPEN SPACE TAX	0.020	469.20
FIRE DIST 3	0.082	1923.72

ASSESSED VALUATION INFORMATION

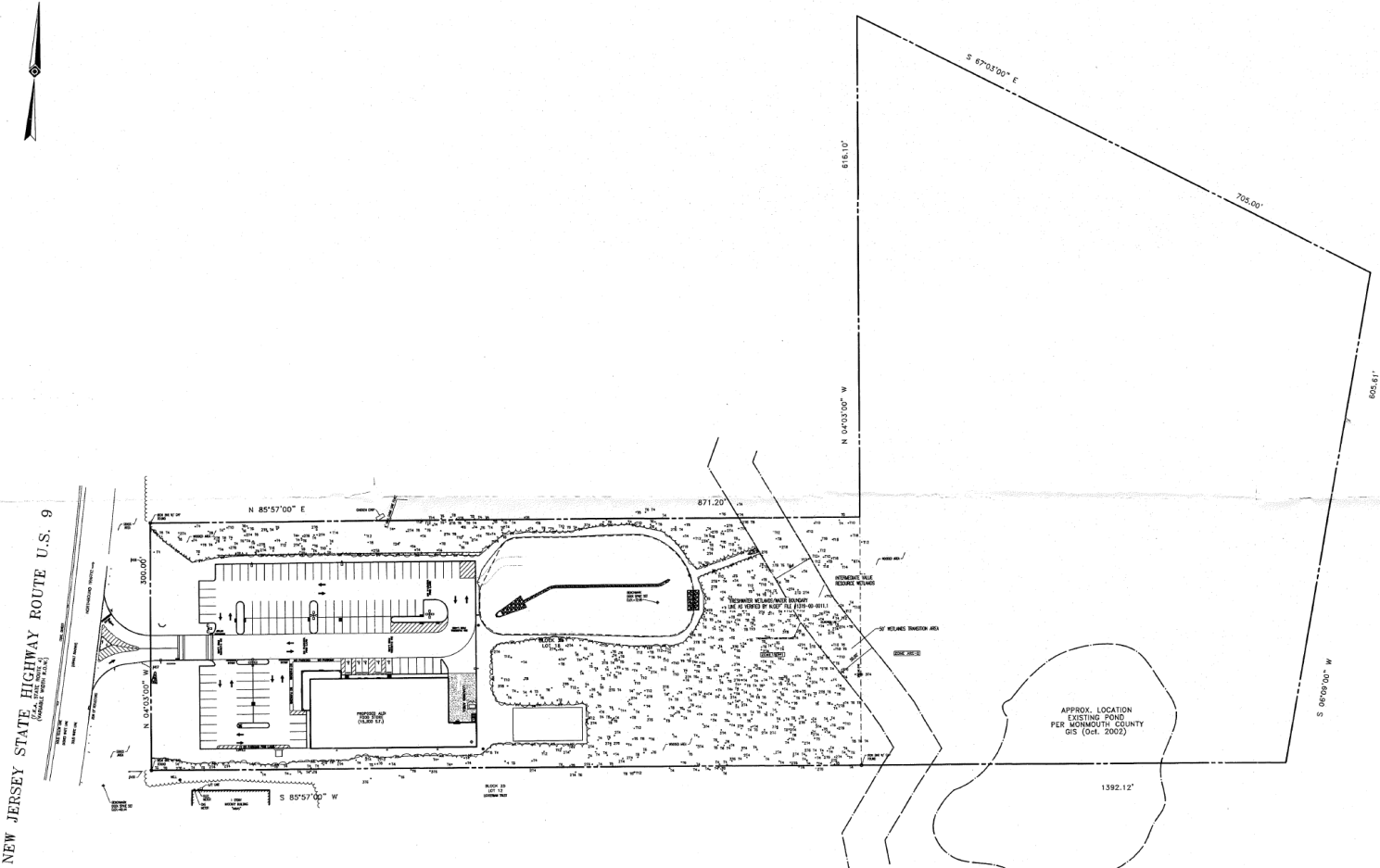
LAND	IMPROVEMENTS	TOTAL
1086800	1259200	2346000
NET TAXABLE VALUE		2346000

2016 TOTAL TAX	2.432	57054.72
2016 NET TAX		57054.72
LESS 2016 PREV. BILLED		28820.61
BALANCE OF 2016 TAX		28234.11

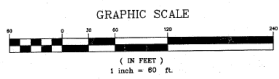
ALDI INC.  
 2700 SAUCON VALLEY ROAD  
 CENTER VALLEY, PA 18034-9399



2016 2ND QTR	14117.05	2016 3RD QTR	14117.05	2017 1ST QTR	14263.68	2017 2ND QTR	14263.68
--------------	----------	--------------	----------	--------------	----------	--------------	----------



NEW JERSEY STATE HIGHWAY ROUTE U.S. 9



<b>BOHLER ENGINEERING, P.C.</b> • CIVIL & CONSULTING ENGINEERS • PROJECT MANAGERS • ENVIRONMENTAL & SITE PLANNERS • MUNICIPAL ENGINEERS 1120 WELSH ROAD, SUITE 200      729 MOUNTAIN BLVD      70 EAST BUNNERS HIGHWAY, SUITE # NORTH WALKERS FORDS, NEW JERSEY 07045      VALLEY STREAM, NEW YORK 11580      5150 872-2000 (201) 383-4300      (408) 668-8300	
PROJECT: ALDI INC. PROPOSED FOOD STORE BLOCK 26, LOT 18 6679 U.S. 9 HOWELL, U.S. 9 TOWNSHIP OF HOWELL, MONMOUTH CO. NJ	TITLE: OVERALL SITE PLAN
B.W. SKAPINETZ PROFESSIONAL ENGINEER NEW JERSEY LICENSE NO. 41885	K.L. HANEY PROFESSIONAL ENGINEER NEW JERSEY LICENSE NO. 43271
SCALE: 1"=60' DATE: 1/04/02 SHEET: 2 OF 8	CHECKED BY: LCM DATE: 1/24/02 CONSTRUCTION CHECK: DATE



