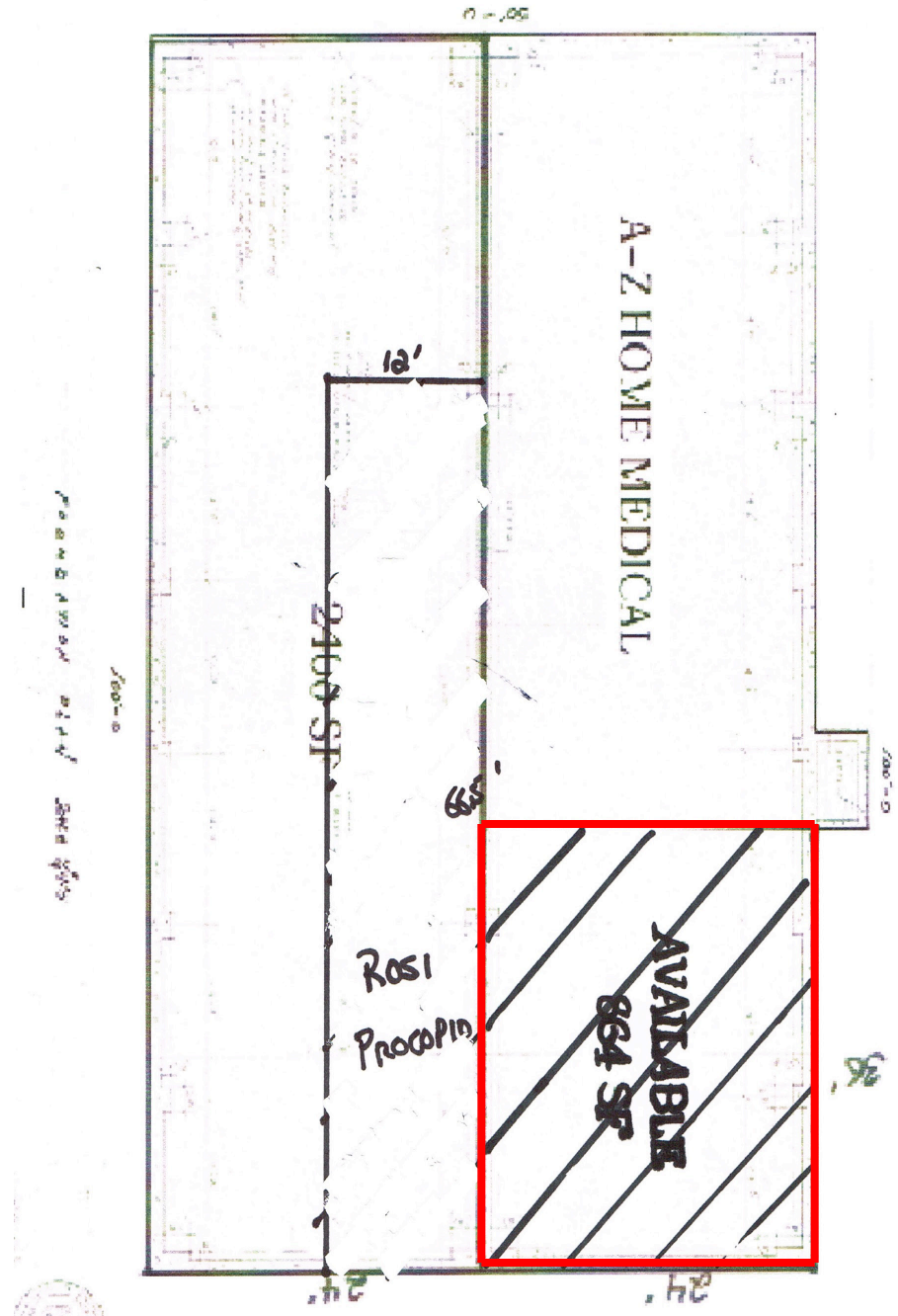
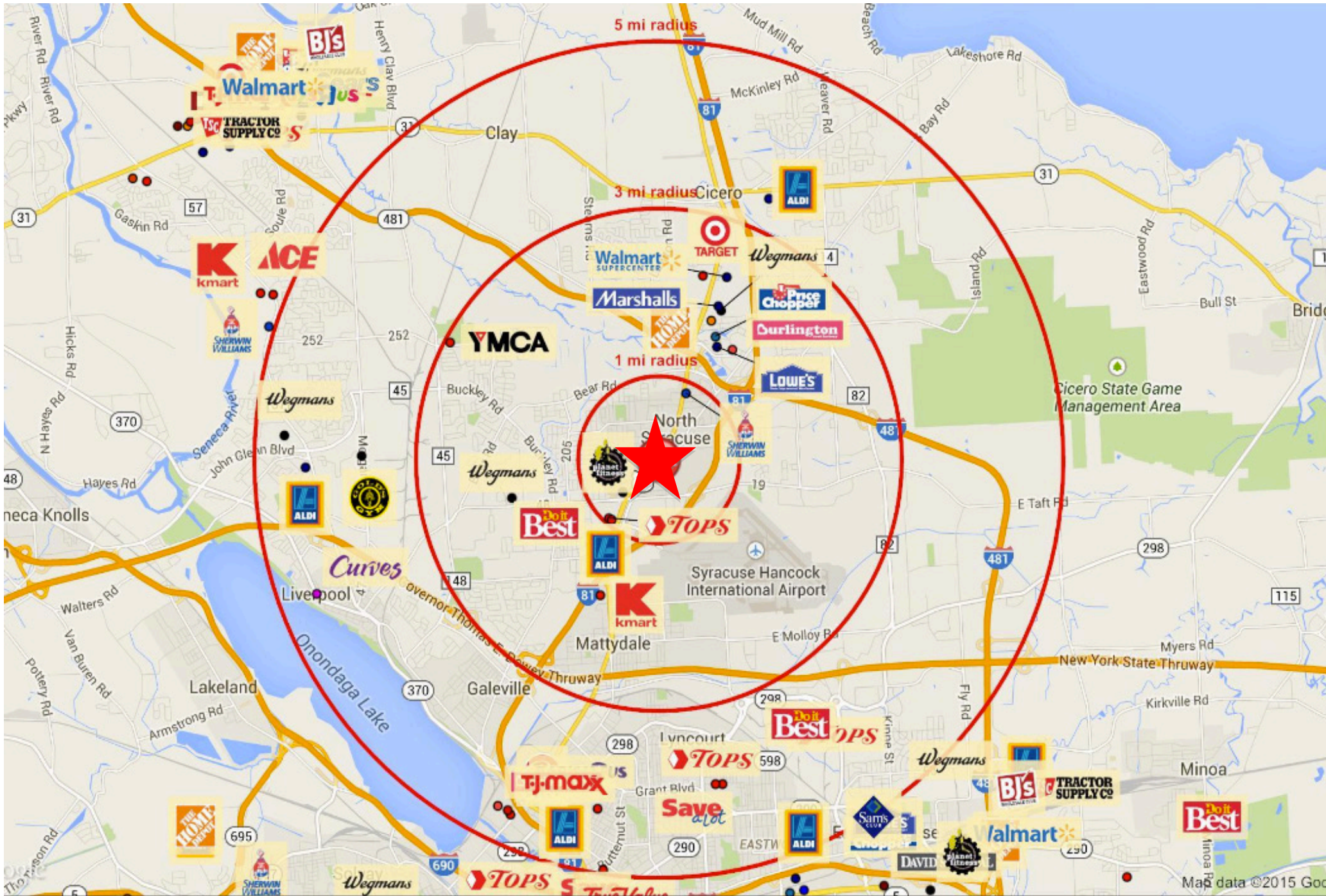


NOT TO SCALE





<b>430 S Main St</b>	<b>1 ml radius</b>		<b>3 ml radius</b>		<b>5 ml radius</b>	
<b>North Syracuse, NY 13212</b>						
<b>Population</b>						
Estimated Population (2014)	9,388		50,442		141,891	
Projected Population (2019)	9,476		50,923		143,239	
Census Population (2010)	9,388		50,455		141,947	
Census Population (2000)	9,619		50,405		138,639	
<i>Projected Annual Growth (2014 to 2019)</i>	88	0.2%	481	0.2%	1,348	0.2%
<i>Historical Annual Growth (2010 to 2014)</i>	-	-	-13	-	-56	-
<i>Historical Annual Growth (2000 to 2010)</i>	-231	-0.2%	51	-	3,308	0.2%
<b>Households</b>						
Estimated Households (2014)	4,257		21,631		60,658	
Projected Households (2019)	4,418		22,446		62,944	
Census Households (2010)	4,163		21,152		59,315	
Census Households (2000)	4,127		20,151		57,237	
<i>Projected Annual Growth (2014 to 2019)</i>	161	0.8%	815	0.8%	2,286	0.8%
<i>Historical Annual Growth (2010 to 2014)</i>	94	0.6%	480	0.6%	1,343	0.6%
<i>Historical Annual Growth (2000 to 2010)</i>	36	0.1%	1,001	0.5%	2,078	0.4%
<b>Average Household Income</b>						
Estimated Average Household Income (2014)	\$59,325		\$67,830		\$62,877	
Projected Average Household Income (2019)	\$64,039		\$73,323		\$68,015	
Census Average Household Income (2010)	\$54,480		\$62,421		\$57,245	
Census Average Household Income (2000)	\$44,721		\$53,335		\$48,984	
<i>Projected Annual Growth (2014 to 2019)</i>	\$4,715	1.6%	\$5,492	1.6%	\$5,138	1.6%
<i>Historical Annual Growth (2010 to 2014)</i>	\$4,845	2.2%	\$5,409	2.2%	\$5,632	2.5%
<i>Historical Annual Growth (2000 to 2010)</i>	\$9,759	2.2%	\$9,086	1.7%	\$8,261	1.7%
<b>Median Household Income</b>						
Estimated Median Household Income (2014)	\$54,509		\$59,380		\$54,675	
Projected Median Household Income (2019)	\$58,587		\$64,121		\$59,226	
Census Median Household Income (2010)	\$49,961		\$54,943		\$50,253	
Census Median Household Income (2000)	\$41,123		\$46,383		\$41,294	
<i>Projected Annual Growth (2014 to 2019)</i>	\$4,078	1.5%	\$4,741	1.6%	\$4,550	1.7%
<i>Historical Annual Growth (2010 to 2014)</i>	\$4,548	2.3%	\$4,437	2.0%	\$4,422	2.2%
<i>Historical Annual Growth (2000 to 2010)</i>	\$8,838	2.1%	\$8,560	1.8%	\$8,959	2.2%