

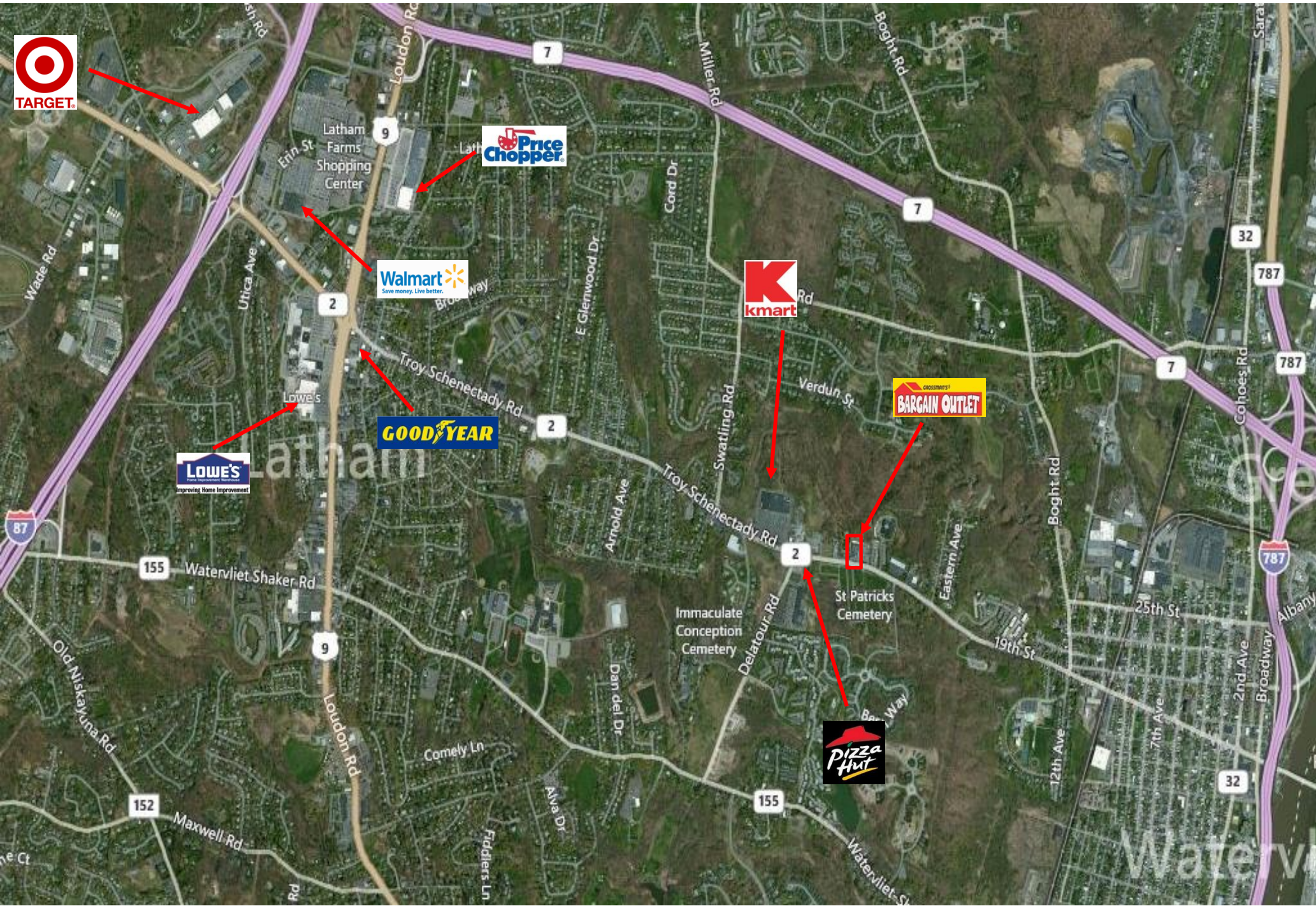


4.13 Acres

6,000 SF

HORNCOMPANIES.com
BARCAIN OUTLET
ELECTRICAL SUPPLY CENTER

Troy Schenectady Rd







Watervliet, NY 12189	3 ml radius		5 ml radius		10 ml radius	
Population						
Estimated Population (2013)	82,030		160,884		419,331	
Projected Population (2018)	82,976		163,183		426,596	
Census Population (2010)	81,779		160,416		417,715	
Census Population (2000)	78,057		154,878		399,619	
<i>Projected Annual Growth (2013 to 2018)</i>	946	0.2%	2,299	0.3%	7,265	0.3%
<i>Historical Annual Growth (2010 to 2013)</i>	251	0.1%	468	0.1%	1,616	0.1%
<i>Historical Annual Growth (2000 to 2010)</i>	3,722	0.5%	5,538	0.4%	18,096	0.5%
Households						
Estimated Households (2013)	34,446		68,868		177,637	
Projected Households (2018)	35,487		71,058		183,635	
Census Households (2010)	33,844		67,593		174,124	
Census Households (2000)	31,886		63,357		164,042	
<i>Projected Annual Growth (2013 to 2018)</i>	1,041	0.6%	2,190	0.6%	5,998	0.7%
<i>Historical Annual Growth (2010 to 2013)</i>	601	0.6%	1,274	0.6%	3,513	0.7%
<i>Historical Annual Growth (2000 to 2010)</i>	1,958	0.6%	4,236	0.7%	10,081	0.6%
Average Household Income						
Estimated Average Household Income (2013)	\$64,332		\$69,396		\$74,082	
Projected Average Household Income (2018)	\$69,125		\$74,472		\$79,814	
Census Average Household Income (2010)	\$58,839		\$64,545		\$68,959	
Census Average Household Income (2000)	\$46,236		\$50,890		\$54,651	
<i>Projected Annual Growth (2013 to 2018)</i>	\$4,793	1.5%	\$5,075	1.5%	\$5,732	1.5%
<i>Historical Annual Growth (2010 to 2013)</i>	\$5,493	3.1%	\$4,851	2.5%	\$5,123	2.5%
<i>Historical Annual Growth (2000 to 2010)</i>	\$12,603	2.7%	\$13,655	2.7%	\$14,308	2.6%
Median Household Income						
Estimated Median Household Income (2013)	\$52,130		\$56,900		\$61,759	
Projected Median Household Income (2018)	\$56,646		\$61,793		\$67,321	
Census Median Household Income (2010)	\$48,178		\$53,073		\$57,347	
Census Median Household Income (2000)	\$37,111		\$41,537		\$45,015	
<i>Projected Annual Growth (2013 to 2018)</i>	\$4,516	1.7%	\$4,893	1.7%	\$5,561	1.8%
<i>Historical Annual Growth (2010 to 2013)</i>	\$3,952	2.7%	\$3,827	2.4%	\$4,412	2.6%
<i>Historical Annual Growth (2000 to 2010)</i>	\$11,068	3.0%	\$11,536	2.8%	\$12,332	2.7%

