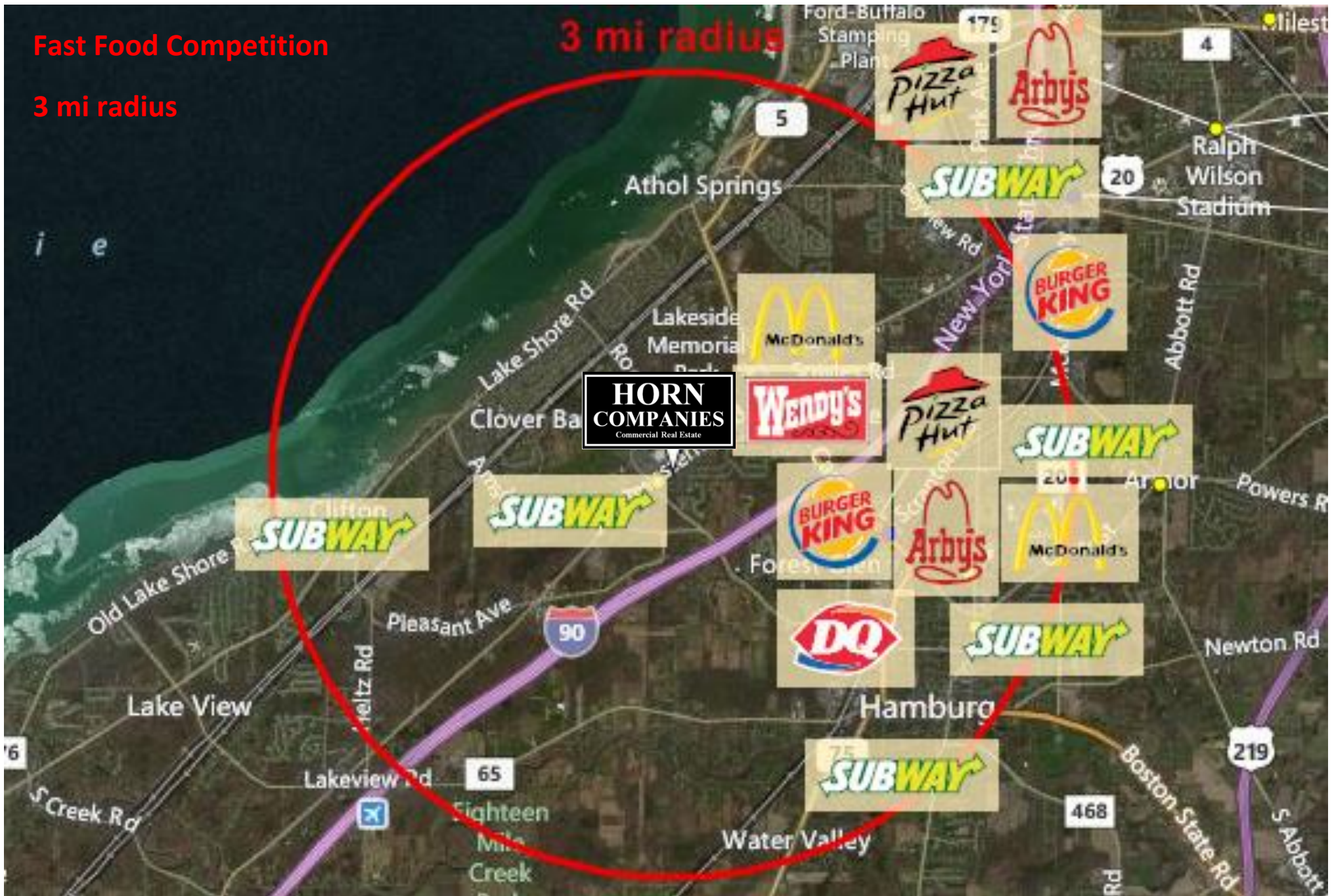
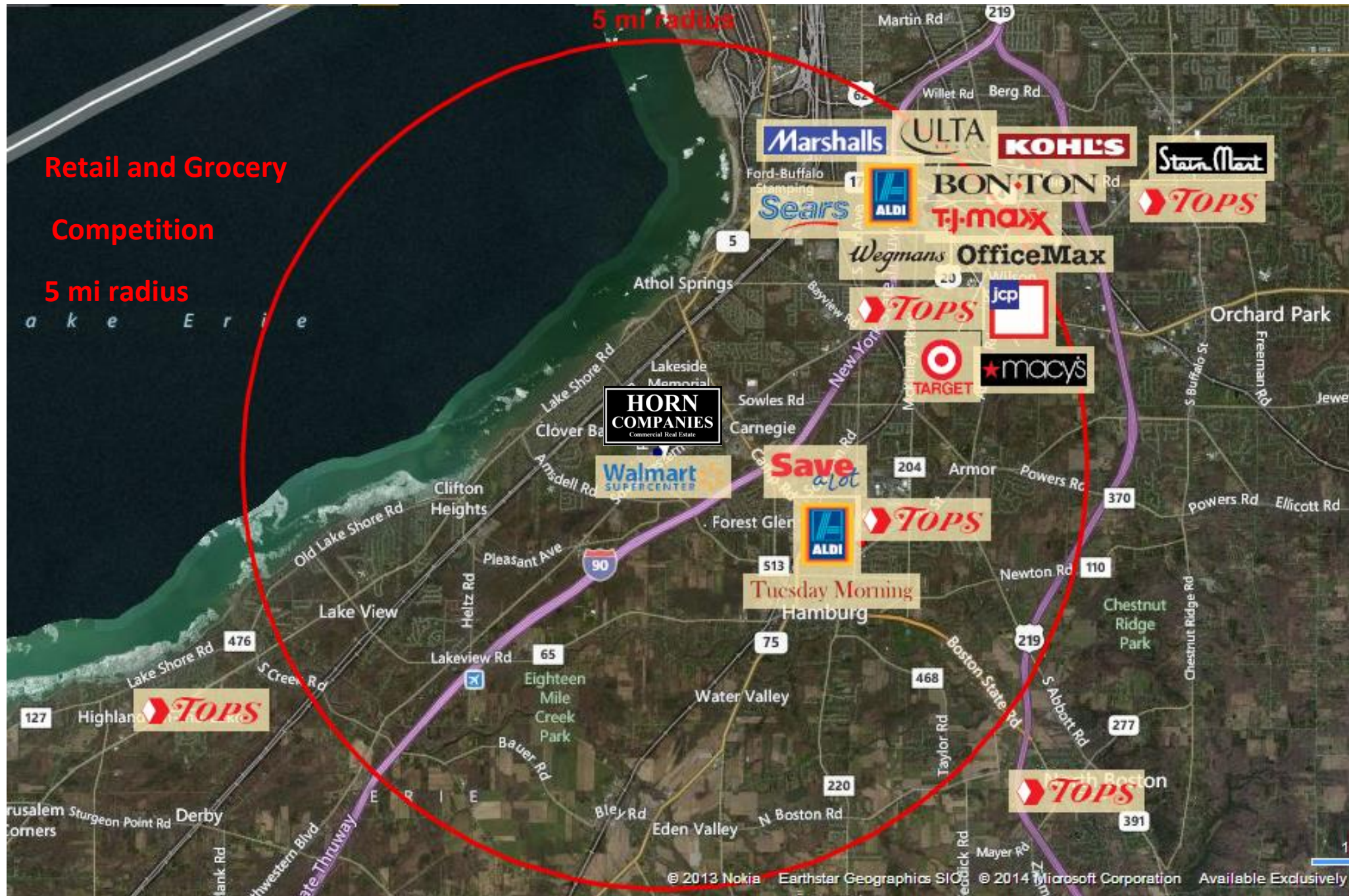
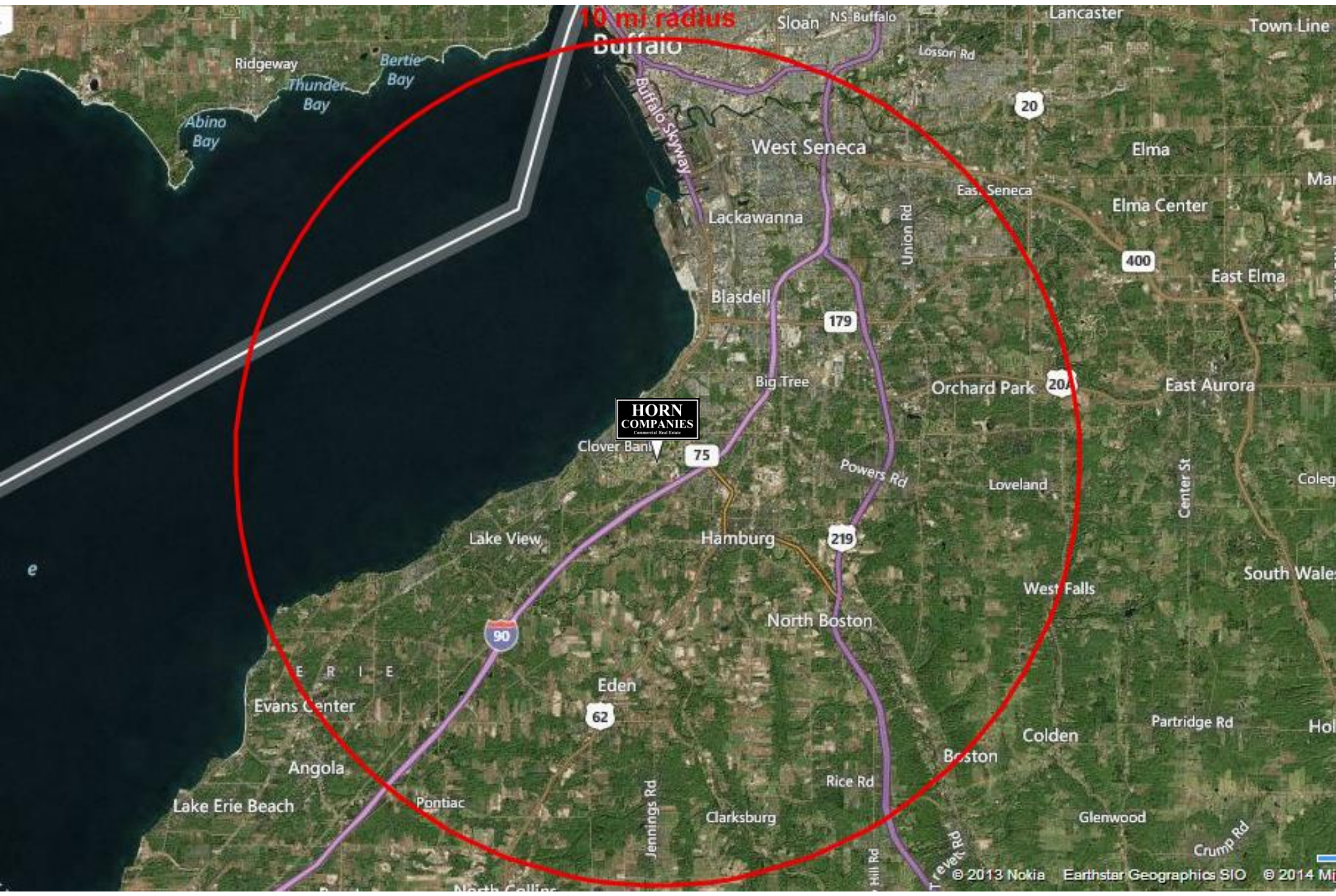


Fast Food Competition

3 mi radius







Hamburg, NY 14075	3 ml radius		5 ml radius		10 ml radius	
Population						
Estimated Population (2013)	32,605		62,436		217,517	
Projected Population (2018)	33,174		63,532		221,323	
Census Population (2010)	32,533		62,296		217,025	
Census Population (2000)	32,940		62,150		223,046	
<i>Projected Annual Growth (2013 to 2018)</i>	569	0.3%	1,096	0.4%	3,807	0.4%
<i>Historical Annual Growth (2010 to 2013)</i>	73	0.1%	140	0.1%	491	0.1%
<i>Historical Annual Growth (2000 to 2010)</i>	-408	-0.1%	145	-	-6,021	-0.3%
Households						
Estimated Households (2013)	13,750		26,084		92,648	
Projected Households (2018)	14,150		26,843		95,336	
Census Households (2010)	13,513		25,635		91,050	
Census Households (2000)	12,825		24,093		88,535	
<i>Projected Annual Growth (2013 to 2018)</i>	400	0.6%	759	0.6%	2,688	0.6%
<i>Historical Annual Growth (2010 to 2013)</i>	236	0.6%	448	0.6%	1,598	0.6%
<i>Historical Annual Growth (2000 to 2010)</i>	688	0.5%	1,542	0.6%	2,515	0.3%
Average Household Income						
Estimated Average Household Income (2013)	\$74,803		\$72,050		\$65,798	
Projected Average Household Income (2018)	\$79,210		\$76,233		\$69,995	
Census Average Household Income (2010)	\$71,907		\$69,443		\$62,711	
Census Average Household Income (2000)	\$56,426		\$56,446		\$50,913	
<i>Projected Annual Growth (2013 to 2018)</i>	\$4,407	1.2%	\$4,183	1.2%	\$4,197	1.3%
<i>Historical Annual Growth (2010 to 2013)</i>	\$2,896	1.3%	\$2,606	1.3%	\$3,087	1.6%
<i>Historical Annual Growth (2000 to 2010)</i>	\$15,481	2.7%	\$12,997	2.3%	\$11,799	2.3%
Median Household Income						
Estimated Median Household Income (2013)	\$64,217		\$62,214		\$55,491	
Projected Median Household Income (2018)	\$69,632		\$67,351		\$60,270	
Census Median Household Income (2010)	\$62,076		\$60,225		\$53,103	
Census Median Household Income (2000)	\$50,105		\$48,867		\$43,244	
<i>Projected Annual Growth (2013 to 2018)</i>	\$5,415	1.7%	\$5,138	1.7%	\$4,779	1.7%
<i>Historical Annual Growth (2010 to 2013)</i>	\$2,141	1.1%	\$1,989	1.1%	\$2,389	1.5%
<i>Historical Annual Growth (2000 to 2010)</i>	\$11,971	2.4%	\$11,357	2.3%	\$9,858	2.3%

