



**Walmart**  
Supercenter





Albion, NY 14411	3 mi radius		5 mi radius		10 mi radius	
<b>Population</b>						
Estimated Population (2013)	8,723		12,709		34,979	
Projected Population (2018)	8,818		12,842		35,406	
Census Population (2010)	8,559		12,406		34,772	
Census Population (2000)	8,819		12,381		36,132	
<i>Projected Annual Growth (2013 to 2018)</i>	95	0.2%	133	0.2%	428	0.2%
<i>Historical Annual Growth (2010 to 2013)</i>	164	0.6%	302	0.8%	207	0.2%
<i>Historical Annual Growth (2000 to 2010)</i>	-260	-0.3%	25	-	-1,360	-0.4%
<b>Households</b>						
Estimated Households (2013)	3,109		4,271		13,027	
Projected Households (2018)	3,180		4,370		13,327	
Census Households (2010)	3,079		4,231		12,901	
Census Households (2000)	2,917		4,081		12,402	
<i>Projected Annual Growth (2013 to 2018)</i>	72	0.5%	99	0.5%	300	0.5%
<i>Historical Annual Growth (2010 to 2013)</i>	30	0.3%	41	0.3%	126	0.3%
<i>Historical Annual Growth (2000 to 2010)</i>	162	0.6%	150	0.4%	499	0.4%
<b>Average Household Income</b>						
Estimated Average Household Income (2013)	\$49,249		\$52,449		\$56,260	
Projected Average Household Income (2018)	\$53,464		\$56,645		\$60,112	
Census Average Household Income (2010)	\$48,563		\$51,532		\$54,352	
Census Average Household Income (2000)	\$38,342		\$40,318		\$43,510	
<i>Projected Annual Growth (2013 to 2018)</i>	\$4,215	1.7%	\$4,196	1.6%	\$3,852	1.4%
<i>Historical Annual Growth (2010 to 2013)</i>	\$686	0.5%	\$916	0.6%	\$1,908	1.2%
<i>Historical Annual Growth (2000 to 2010)</i>	\$10,221	2.7%	\$11,215	2.8%	\$10,842	2.5%
<b>Median Household Income</b>						
Estimated Median Household Income (2013)	\$39,775		\$44,797		\$49,138	
Projected Median Household Income (2018)	\$43,672		\$48,919		\$53,212	
Census Median Household Income (2010)	\$40,776		\$44,932		\$46,978	
Census Median Household Income (2000)	\$31,132		\$33,796		\$37,081	
<i>Projected Annual Growth (2013 to 2018)</i>	\$3,897	2.0%	\$4,122	1.8%	\$4,075	1.7%
<i>Historical Annual Growth (2010 to 2013)</i>	-\$1,001	-0.8%	-\$135	-0.1%	\$2,160	1.5%
<i>Historical Annual Growth (2000 to 2010)</i>	\$9,644	3.1%	\$11,136	3.3%	\$9,896	2.7%

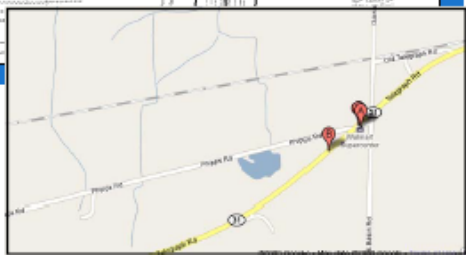


STORE #3607

Albion, New York  
13858 NY State Route 31 West



**Lot – 0.66± Acres (\$215,000)**  
**\$100,000**



FOR MORE INFORMATION CONTACT:

Tom Hornstein, Realty Broker  
Ph: (315) 569-4345  
Mobile(315)214-3844  
horn@horncompanies.com

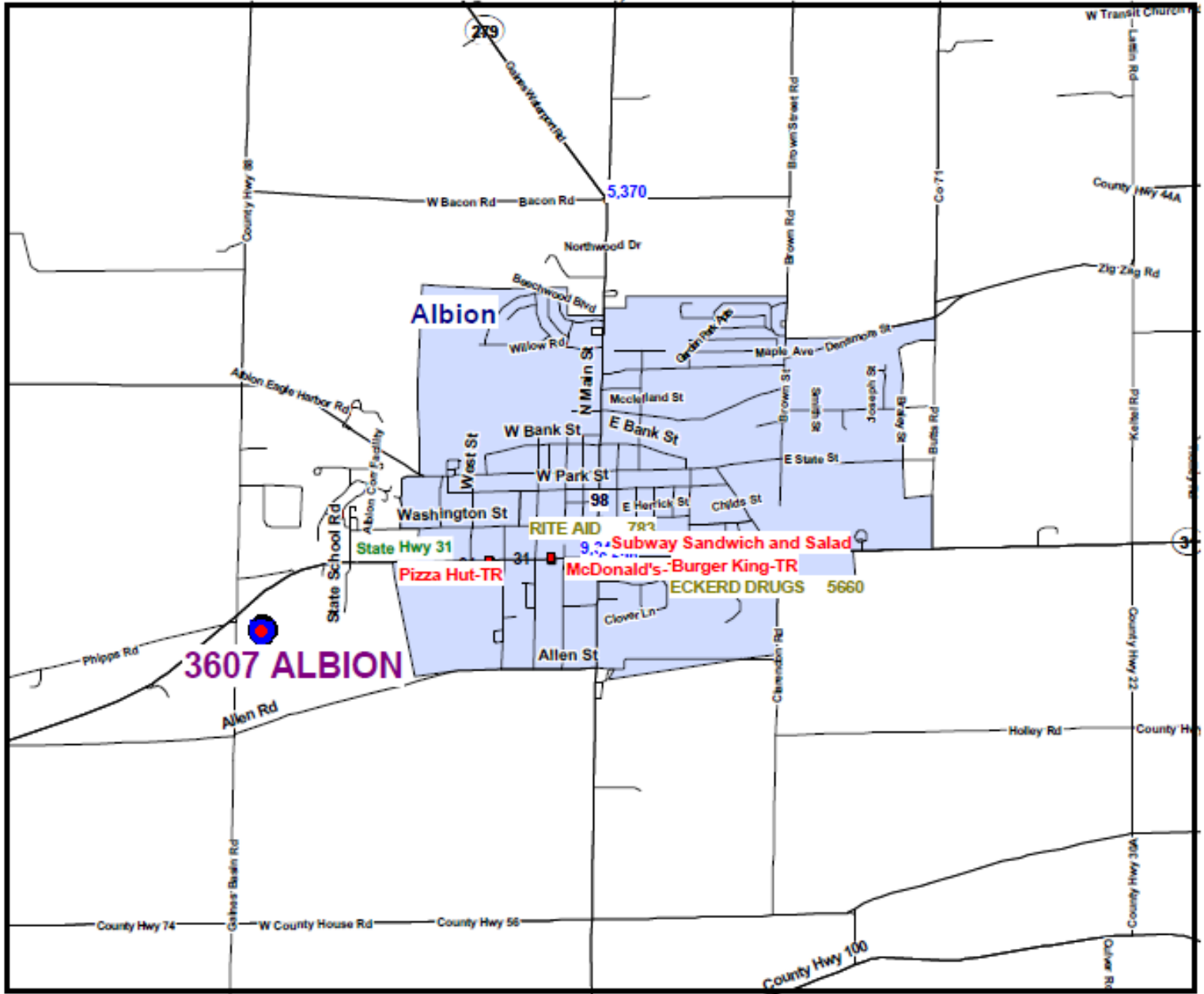


site  
13858 ROUTE 31 WEST Albion, NY 14411

**Legend**

- Restaurants
- Once Occupied
- Supercenters
- Wal-Marts
- Neighborhood Mkts
- Sam's Clubs
- DC's
- ◆ Drug Stores
- ◆ Data Mktg
- ◆ Traffic Counts
- Highways
- Highways
- Major Roads

Site Coordinates  
 Longitude/X: -78.221800  
 Latitude/Y: 43.236800



AnySite®

Print Date: 12/22/06  
Data Source: © 2006 MapInfo Corporation, Troy, New York. All rights reserved. 1-800-484-0129

site  
13858 ROUTE 31 WEST Albion, NY 14411

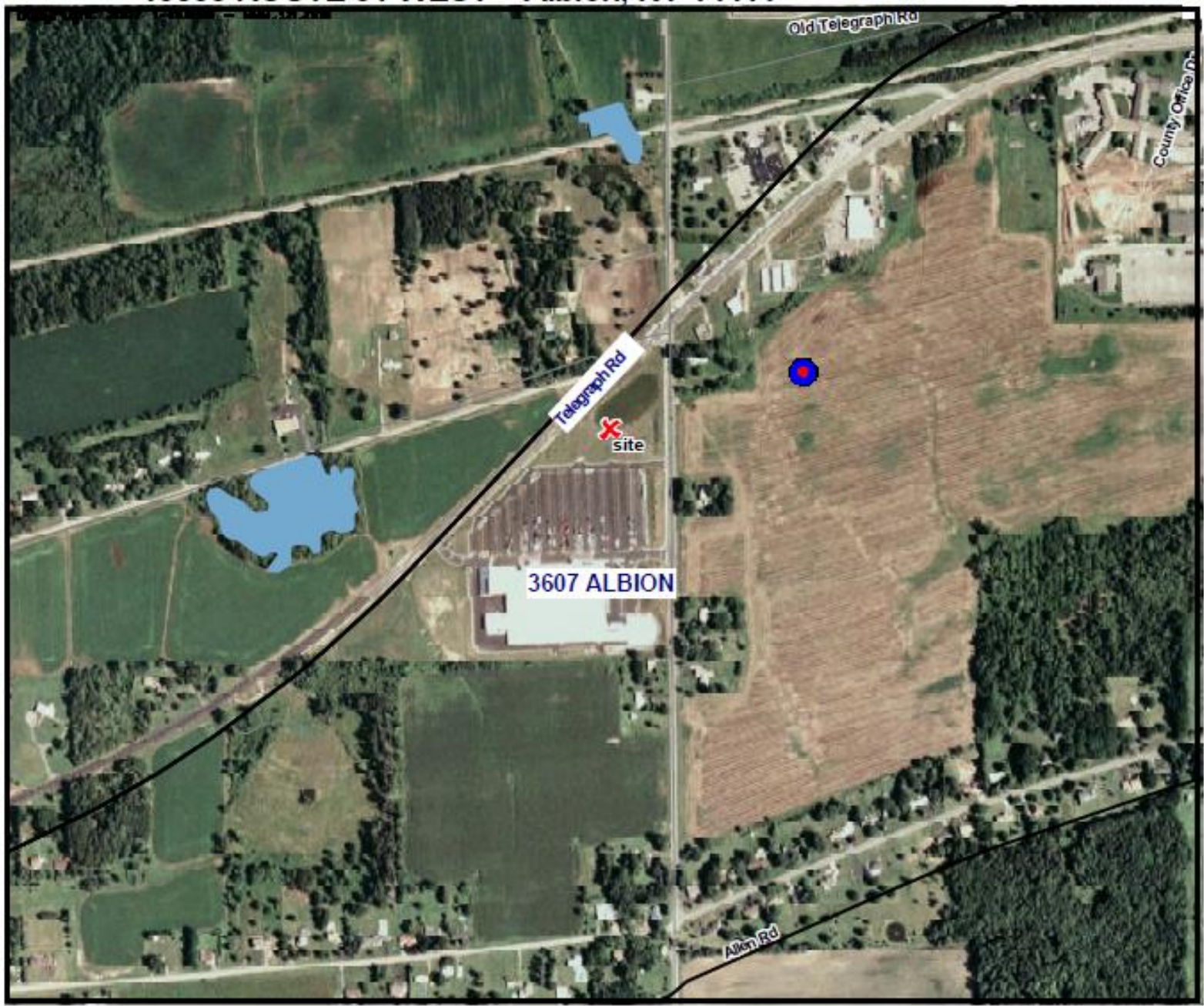
**Legend**

- Wal-Mart's
- Supercenters
- Neighborhood Mkts
- Sam's Clubs
- DC's
- State Boundaries

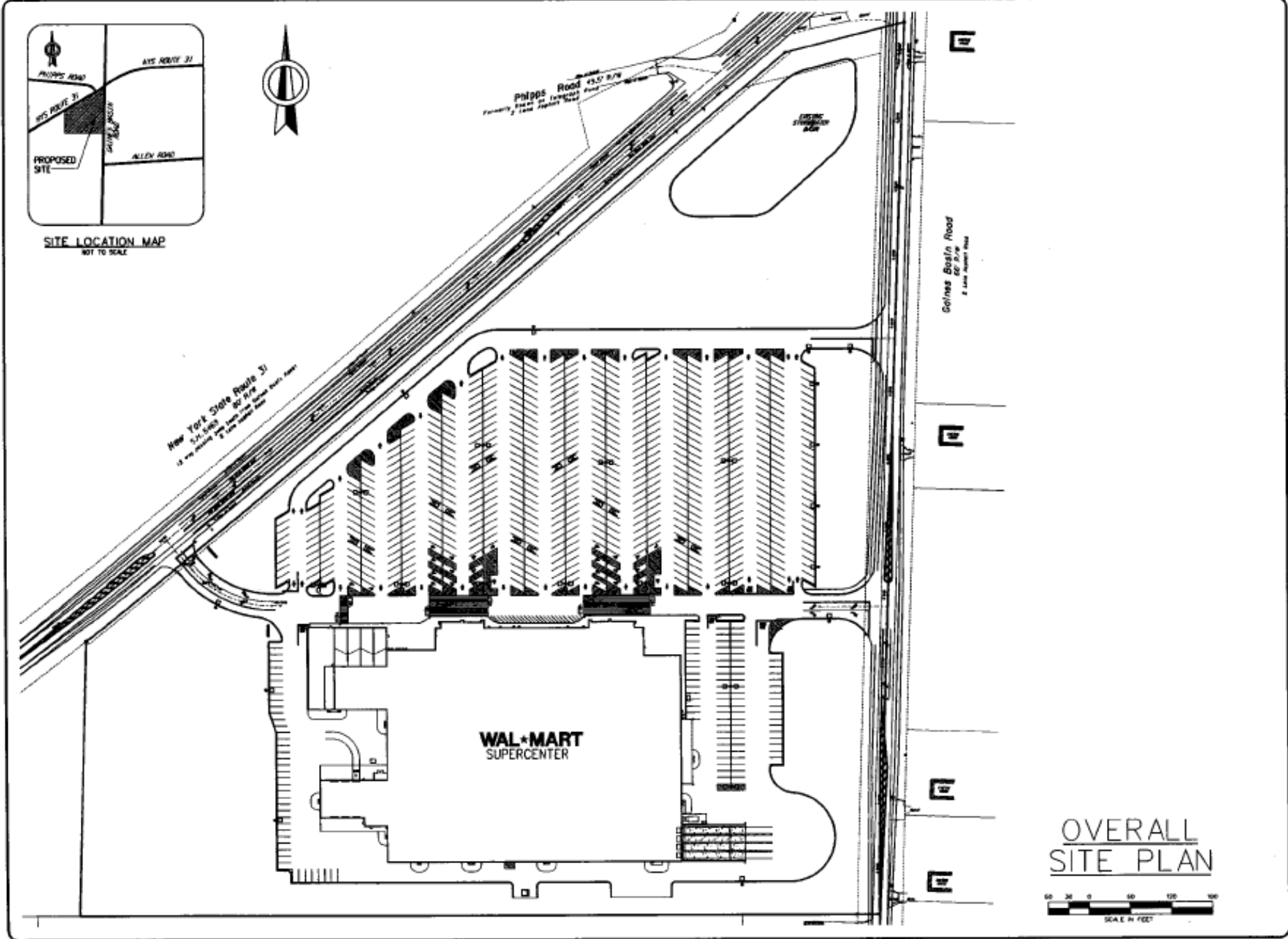
Site Coordinates

Longitude/X: -78.224969  
Latitude/Y: 43.236101



© 2008 MapInfo Corporation, Troy, New York. All rights reserved. 1-800-894-0229  
 Data Source:   
 Print Date: 3/11/2008

AnySite®



SITE LOCATION MAP  
NOT TO SCALE

New York State Route 31  
S.L. 1005  
1/2 mile from the intersection of NYS Route 31 and  
Alley Road

**WAL-MART**  
SUPERCENTER

OVERALL  
SITE PLAN



REVISED	DATE
REVISED NO. 01	12/12/09

SUBMIT POINT SHEET  
REVISED 12/12/09  
100/200-009 736

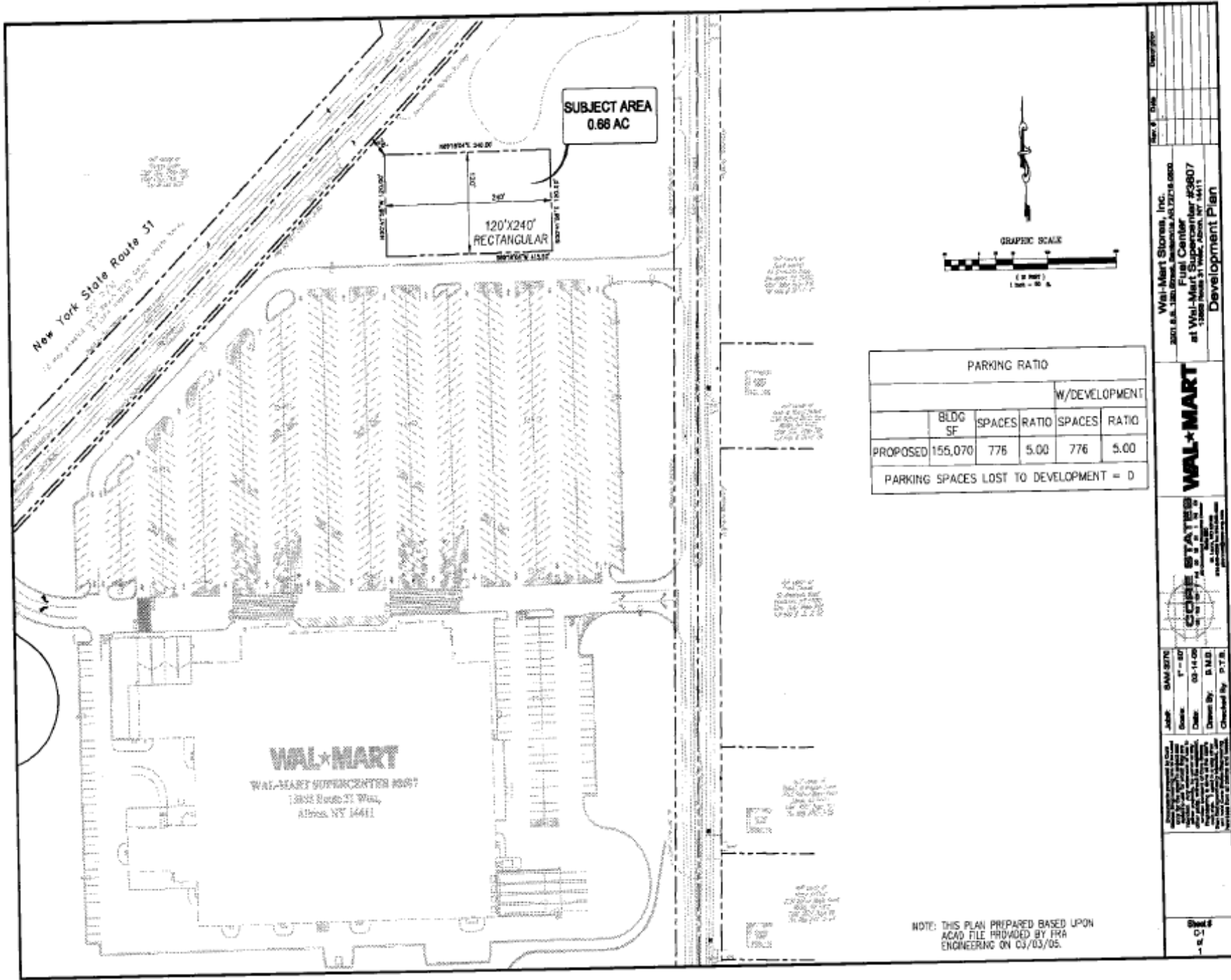
WAL-MART SUPERCENTER - FUELING STATION  
NYS ROUTE 31 AND GAINES BASIN ROAD  
TOWN OF ALBION, ORLEANS COUNTY, NEW YORK  
WAL-MART STORES, INC.  
2001 S.E. 10th STREET, BENTONVILLE, ARKANSAS 72716-0550

DATE  
DRAWN  
CHECKED  
SCALE  
BY  
DATE  
SHEET

**C-1**

3 OF 8 SHEETS  
C-1.dwg





PARKING RATIO

	BLDG SF	SPACES	W/DEVELOPMENT	
			RATIO	SPACES
PROPOSED	155,070	776	5.00	776

PARKING SPACES LOST TO DEVELOPMENT = 0

Walmart Realty  
 Development Plan  
 at Wal-Mart Supercenter #2607  
 13802 Route 51, Albion, NY 14411

**WAL-MART**

COISE STATES

Job #: 044-0776  
 Scale: 1" = 40'  
 Date: 03-14-05  
 Drawn By: P.M.B.  
 Checked By: P.T.R.

NOTE: THIS PLAN PREPARED BASED UPON ACAD FILE PROVIDED BY FRA ENGINEERING ON 03/03/05.

Sheet #  
 C1  
 1